

Angular Contact Ball Bearings

Bearing No. : **NACHI 7236C**

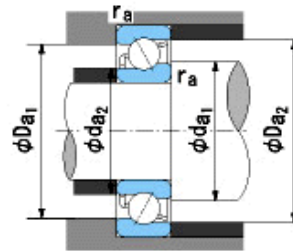
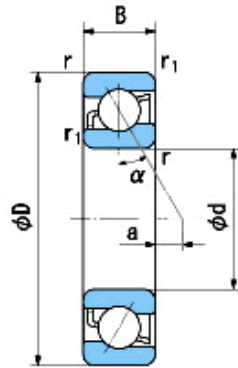
■ Bearing Type

■ Clearance

■ Tolerance Class

Dimensions

d = 180⁰_{-0.025}
 D = 320⁰_{-0.040}
 B = 52⁰_{-0.250}
 r = 4~6.5
 (Radial Direction)
 r = 4~9
 (Axial Direction)
 r1 = 1.5~3
 (Radial Direction)
 r1 = 1.5~5
 (Axial Direction)
 a = 3.3



Dimensions

da1(min) = 198
 da2(min) = 189
 Da1(max) = 302
 Da2(max) = 311
 ra(max) = 3
 ra1(max) = 1.5
 Mass = 19.9 kg

Basic Dynamic Load Rating Cr : **310,000** N

Basic Static Load Rating Cor : **385,000** N

Limiting Speed ;

Grease Lubrication : **3,200** min⁻¹

Oil Lubrication : **4,400** min⁻¹

O.D.Surface Runout with Side :

Axial Runout with Bore :

Axial Runout with Raceway :

Width Variation :

Radial Runout :

INNER RING

OUTER RING

-
 -
 -
0.030 **0.030**
0.030 **0.070**